

PUREPATH 100

4" Wiped Film Distillation Package

SHORT LEAD TIMES
GET IN BUSINESS FASTER!

SEE IT IN ACTION!
MAKE AN APPOINTMENT TO
TOUR A PROCESSING FACILITY



Cascade's PUREPATH 100 is a 4" Wiped Film Distillation Package optimized for viscous crude refinement. The package features top quality components from Agilent, AGI, Heidolph, and Huber.

FEATURES

- Fused electrical box allows system to run on a single 120V - 240V / 1ph / 50AMP service
- Modular system allows for expansion
- All tubing, fluids, connections included
- Requires dry ice for cold trap
- Professional on-site installation in the U.S. included

AGILENT VACUUM PUMP

- Foreline trap prevents backstreaming and contamination

ASAHI PRECISION GLASS

- Evaporation surface area 0.1m² / Thermal transfer area 0.2m²
- 2000mL Jacketed Feed Flask with temp probe
- Greaseless joints prevent contamination
- Dual glass cold traps (dry ice required)

HUBER TEMPERATURE CONTROL

- CC-202C Heating Feed Flask with temp probe
- 125 Ministat Main Body Internal Condenser
- CC-304B Heating Main Body Jacket

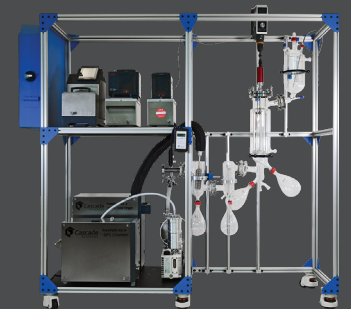
WARRANTY

- Heidolph Precision 200 Overhead Stirrer – 3/yr
- Agilent Vacuum Pump – 1/yr
- Huber Temp Control - 1/yr (Register for extended 3/yr guarantee for plug & play electronic components, 2/yr for refrigeration, mechanical, electrical components)

NRTL CERTIFIED COMPONENTS



UPGRADE WITH KIT A
PUREPATH 100 + KIT A
Mechanically Refrigerated
Cold Traps

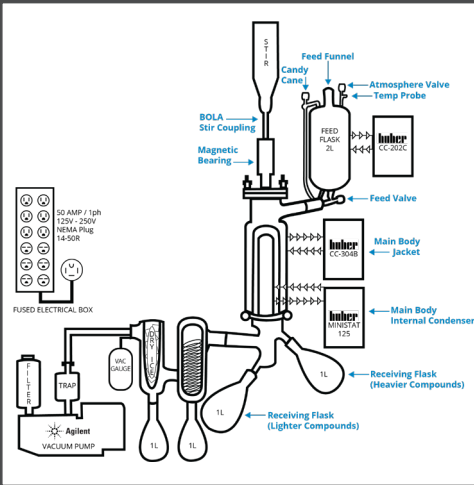


503-847-9047
info@cascalescience.com
cascalescience.com

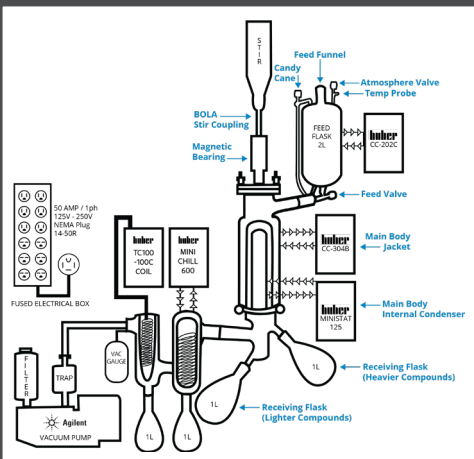
VISIT OUR SHOWROOM!
6725 NE Evergreen Pkwy, Ste 106
Hillsboro, OR 97124

PUREPATH 100 4" Wiped Film Distillation Base Package

SPECIFICATIONS



PUREPATH 100 DIAGRAM



PUREPATH 100 + KIT A DIAGRAM

ASAHI PRECISION GLASS

Jacketed Evaporator ID	100mm, evap surface area of 0.1m ²
Glass Temperature Range	-90°C to +230°C / Delta 110°C
Feed Flask	2L, includes vent valve, therm pocket, cap, needle valve
PTFE Wiper	+200°C
Dry Ice Glass Cold Trap	Approximately 473mL

HUBER TEMPERATURE CONTROL

CC-202C Heating Feed Flask with Temperature Probe

Temperature Range	45°C to 200°C
Temperature Stability	±0.02°C
Controller	Pilot ONE (E-grade "Basic")
Heating Capacity	2kW

Operating Data

Bath Volume	2L
Power Supply	230V 1~ 50/60Hz 10.0AMP

NRTL Certified

125 Ministat Cooling Main Body Internal Condenser

Temperature Range	-25°C to 150°C					
Temperature Stability	±0.02°C					
Controller	Pilot ONE (E-grade "Basic")					
Cooling Capacity	100	20	0	-10	-20	°C
	0.3	0.3	0.21	0.15	0.05	kW

Cooling Machine

Cooling Machine	Air-cooled
------------------------	------------

Refrigerant

Refrigerant	R290 (0.1kg)
--------------------	--------------

Operating Data

Bath Volume	2.75L
Power Supply	115V 1~ 50/60Hz 11.5AMP

NRTL Certified

CC-304B Heating Main Body Jacket

Temperature Range	28°C to 300°C
Controller	Pilot ONE (E-grade "Basic")
Heating Capacity	3kW

Operating Data

Bath Volume	5L
Power Supply	230V 1~ 50/60Hz 14.0AMP

NRTL Certified

AGILENT VACUUM PUMP

DS302 8.2 CFM Oil Rotary Vane

Ultimate Pressure	2 x 10 ⁻³ mbar
Power	120V / 1ph

Vacuum Hardware and Connections

Vacuum Hardware and Connections	Includes digital vacuum gauge, foreline trap, mist filter
--	---

CASCADE SCIENCES PUREPATH 100

Overall Dimensions	76.5"W x 27.5"D x 77"H
Facility Power Requirements	120V - 240V / 1PH / 50AMP Fused Panel, UL Listed

503-847-9047

info@cascaDESCIENCES.COM
cascaDESCIENCES.COM

VISIT OUR SHOWROOM!

6725 NE Evergreen Pkwy, Ste 106
Hillsboro, OR 97124