

PUREPATH 100

4" Wiped Film Distillation Package

SHORT LEAD TIMES
GET IN BUSINESS FASTER!

SEE IT IN ACTION!
MAKE AN APPOINTMENT TO
TOUR A PROCESSING FACILITY



Cascade's PUREPATH 100 is a 4" Wiped Film Distillation Package optimized for viscous crude refinement. The package features top quality components from Agilent, AGI, Heidolph, and Huber.

FEATURES

- Fused electrical box allows system to run on a single 120V - 240V / 1ph / 50AMP service
- Modular system allows for expansion
- All tubing, fluids, connections included
- Requires dry ice for cold trap
- Professional on-site installation in the U.S. included

AGILENT VACUUM PUMP

- Foreline trap prevents backstreaming and contamination

ASAHI PRECISION GLASS

- Evaporation surface area 0.1m² / Thermal transfer area 0.2m²
- 2000mL Jacketed Feed Flask with temp probe
- Greaseless joints prevent contamination
- Dual glass cold traps (dry ice required)

HUBER TEMPERATURE CONTROL

- CC-202C Heating Feed Flask with temp probe
- 125 Ministat Main Body Internal Condenser
- CC-304B Heating Main Body Jacket

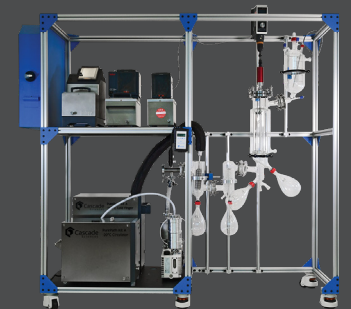
WARRANTY

- Heidolph Precision 200 Overhead Stirrer – 3/yr
- Agilent Vacuum Pump – 1/yr
- Huber Temp Control - 1/yr (Register for extended 3/yr guarantee for plug & play electronic components, 2/yr for refrigeration, mechanical, electrical components)

NRTL CERTIFIED COMPONENTS



UPGRADE WITH KIT A
PUREPATH 100 + KIT A
Mechanically Refrigerated
Cold Traps



503-847-9047
info@cascalescience.com
cascalescience.com

VISIT OUR SHOWROOM!
6725 NE Evergreen Pkwy, Ste 106
Hillsboro, OR 97124

PUREPATH 100 4" Wiped Film Distillation Base Package

SPECIFICATIONS

ASAHI PRECISION GLASS

Jacketed Evaporator ID	100mm, evap surface area of 0.1m ²
Glass Temperature Range	-90°C to +230°C / Delta 110°C
Feed Flask	2L, includes vent valve, therm pocket, cap, needle valve
PTFE Wiper	+200°C
Dry Ice Glass Cold Trap	Approximately 473mL

HUBER TEMPERATURE CONTROL

CC-202C Heating Feed Flask with Temperature Probe

Temperature Range	45°C to 200°C
Temperature Stability	±0.02°C
Controller	Pilot ONE (E-grade "Basic")
Heating Capacity	2kW

Operating Data

Bath Volume	2L
Power Supply	230V 1~ 50/60Hz 10.0AMP

NRTL Certified

125 Ministat Cooling Main Body Internal Condenser

Temperature Range	-25°C to 150°C					
Temperature Stability	±0.02°C					
Controller	Pilot ONE (E-grade "Basic")					
Cooling Capacity	100	20	0	-10	-20	°C
	0.3	0.3	0.21	0.15	0.05	kW

Cooling Machine

Air-cooled

Refrigerant

R290 (0.1kg)

Operating Data

Bath Volume	2.75L
Power Supply	115V 1~ 50/60Hz 11.5AMP

NRTL Certified

CC-304B Heating Main Body Jacket

Temperature Range	28°C to 300°C
Controller	Pilot ONE (E-grade "Basic")
Heating Capacity	3kW

Operating Data

Bath Volume	5L
Power Supply	230V 1~ 50/60Hz 14.0AMP

NRTL Certified

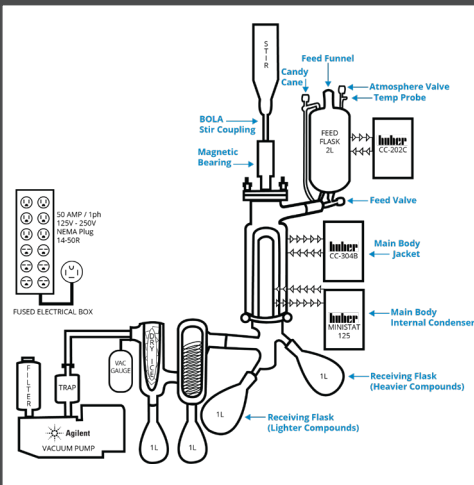
AGILENT VACUUM PUMP

DS302 8.2 CFM Oil Rotary Vane

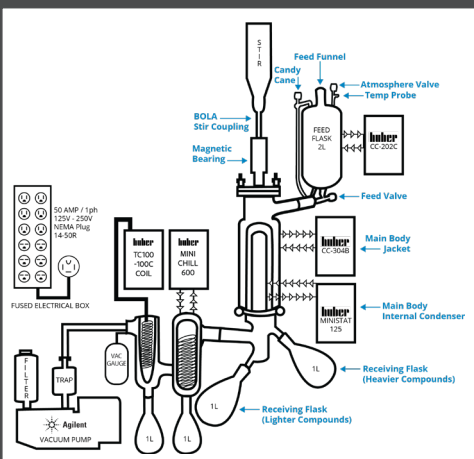
Ultimate Pressure	2 x 10 ⁻³ mbar
Power	120V / 1ph
Vacuum Hardware and Connections	Includes digital vacuum gauge, foreline trap, mist filter

CASCADE SCIENCES PUREPATH 100

Overall Dimensions	76.5"W x 27.5"D x 77"H
Facility Power Requirements	120V - 240V / 1PH / 50AMP Fused Panel, UL Listed



PUREPATH 100 DIAGRAM



PUREPATH 100 + KIT A DIAGRAM

503-847-9047

info@cascaDESCIENCES.COM
cascaDESCIENCES.COM

VISIT OUR SHOWROOM!

6725 NE Evergreen Pkwy, Ste 106
Hillsboro, OR 97124